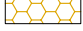
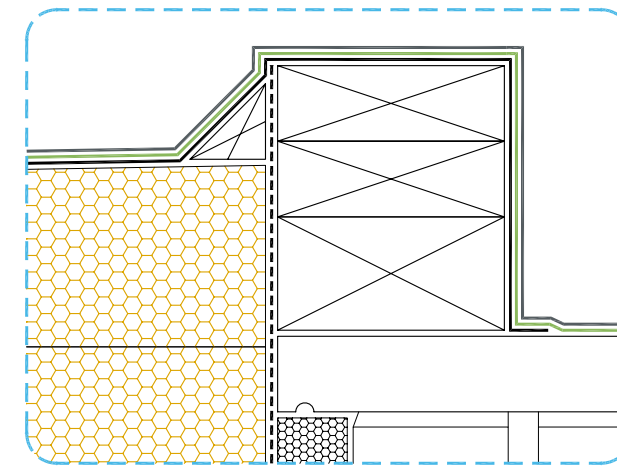
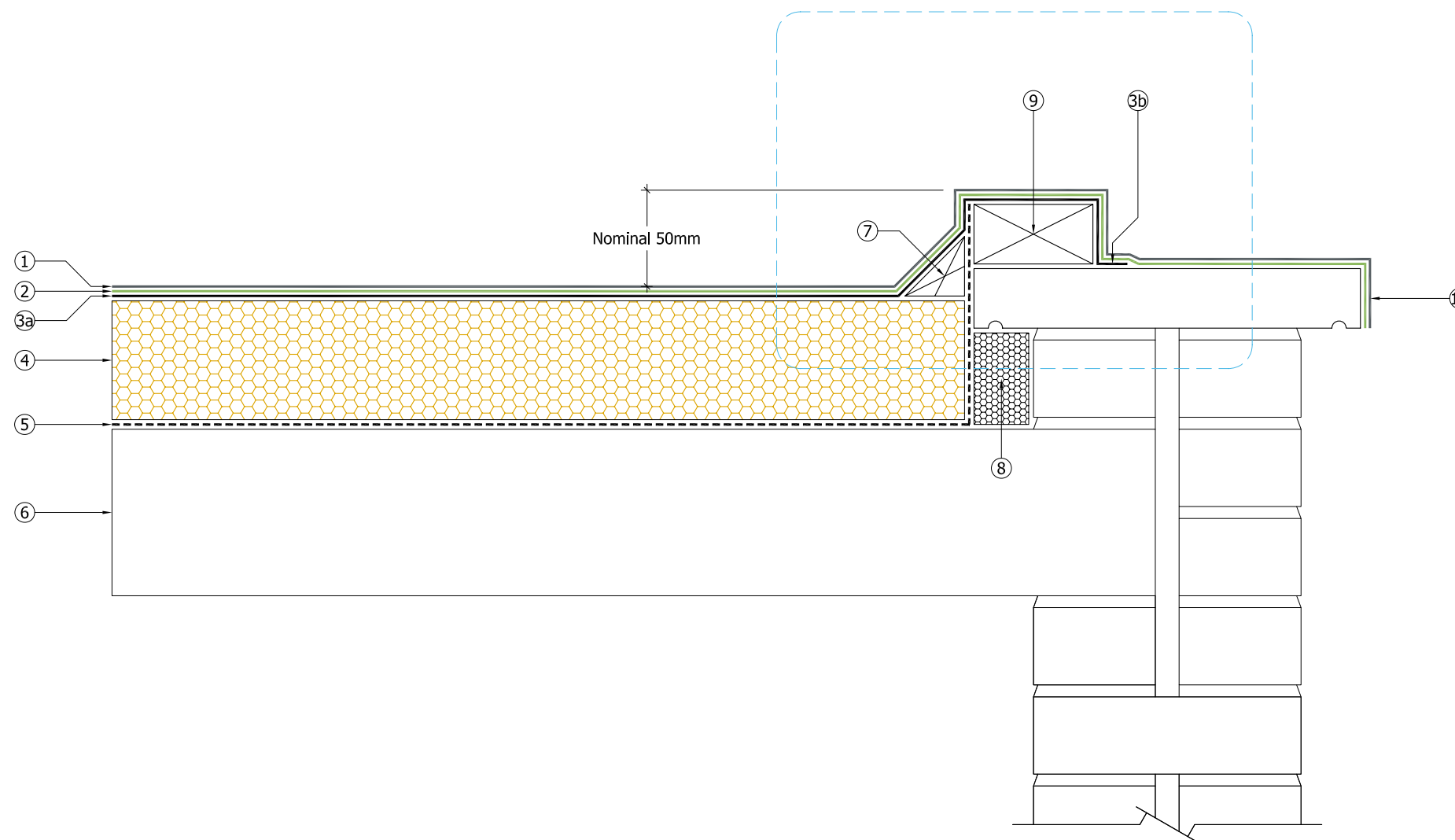


Key

- ① — Decaflex Top Coat applied in strict accordance with Sika Liquid Plastics Project Specification
- ② — Decaflex Embedment Coat applied at correct coverage rate for the substrate surface conditions embedded with Sika Reemat Premium GFM
- ③a — Sika Liquid Plastics Carrier Membrane SA applied in strict accordance with Sika Liquid Plastics Specification
- ③b — Sika Liquid Plastics Carrier Membrane SA applied beyond general insulation surfaces on to prepared and appropriately primed application surfaces
- ④  Deco therm insulation bonded in strict accordance with Sika Liquid Plastics Project Specification
- ⑤ - - - - S-Vap 5000E SA self adhesive Vapour Control Layer [as required] applied to substrates prepared and primed with Sika Primer 600 in strict accordance with Sika Liquid Plastics Project specification
- ⑥ Existing substrate prepared in strict accordance with Sika Liquid Plastics Project Specification
- ⑦ Tanalised timber fillets [as required] bonded with Decostik SP
- ⑧ Proprietary filler pieces inserted to prevent voids where appropriate
- ⑨ Suitably dimensioned tanalised timber hard edges mechanically fixed to raise the existing kerb minimum 50mm above finished roof level
- ⑩ Fully reinforced Decaflex Waterproofing Membrane terminated at a suitable downward facing position



Typical Tapered Insulation Option



Sika Liquid Plastics
 Sika House
 Miller Street
 Preston
 Lancashire PR1 1EA
 Telephone: 01772 259781
 Email: technical.customer.services@uk.sika.com
 Web: www.liquidplastics.co.uk

This drawing is solely intended to illustrate the correct application of Sika Liquid Plastics products and systems. It must be read in conjunction with the appropriate specification and current issue of relevant Product Data Sheets. All elements bearing reference to structural and/or thermal design are shown indicatively and should not be used in whole or in part for any aspect of project design without consulting the relevant authorities.

For refurbishment projects, all aspects of the existing roof are deemed to be fully compliant with BS 6229:2003 [Code of Practice for Flat Roofs with Continuously Supported Coverings] or improved upon for instances where these standards are not met.

Site-specific details not covered by our standard range can be obtained by providing relevant information to the email address shown.

Project N ^o	
DWG N ^o	Revision

Project:

Drawing Title:
 Built Up Roof Application to an existing low parapet with fully bonded existing copings

Scale: NTS @ A3	Drawn:
-----------------	--------

Date:

